

GROUND FLOOR TREE & PALM PLANT LIST

NO.	COMMON NAME	SCIENTIFIC NAME	AMT.	SIZE	NOTES
1	Monkeypod (Existing)		5		refer to landscape notes
2	Autograph Tree	<i>Clusia major</i>	16	45 g.c.	Min. 6' trk. ht. 4" Cal.



MAP KEY:

- RAMP ENTRY TO UPPER AND LOWER PARKING
- STREET PARKING PAVED ACCESS
- AUTOGRAPH TREE w/ FLOWERING TIARE GARDENIA HEDGE BENEATH.
- NATURAL TONE QUARTZITE STONE
- OUTDOOR SEATING w SHADE UMBRELLA
- LINEAR ROCK GARDEN w/ 1/2"-8" DIAMETER RIVER ROCK w/ ACCENT BOULDERS & RHAPIS PALMS @ COLUMNS, SEE: L-1, SEC 'A'
- DESIGNED PAVING FOR PRIVATE ROAD - TYP.
- COBBLE STONE DROP-OFF ZONE
- SIGN TO BE DETERMINED BY OTHERS
- OUTDOOR LEISURE/ BAR SEATING
- AUTOGRAPH TREE IN ACCENT PLANTER & STEP UP TO SEATING AREA SEE: L-3, SEC 'A'
- EXISTING SIDEWALK & GREENSCAPE BUFFER TO ROAD
- EXISTING MONKEYPOD TREES TO REMAIN - TYP (SEE LANDSCAPE NOTES.
- EXISTING BUS STOP w/ TYP. QUARTZITE PAVING
- RESTAURANT OVERFLOW SEATING
- ACCENT LOGO TBD BY OTHERS
- HOTEL & RESTAURANT TOWERS
- ACCENT TRELLIS & PROPERTY GREEN BUFFER SEE: L-2, SEC 'A'

SUPPORT COLUMN BY OTHERS

RHAPIS PALM ACCENT

ROCK GARDEN w/ VARIED DIMENSION RIVER ROCK & 24-48" HT. ACCENT BOULDERS

PAVED ROAD TYP / LINEAR ROCK GARDEN w/ 1/2"-8" DIA. RIVER ROCK

A.TYP SEC: PRIVATE ROAD MEDIAN.

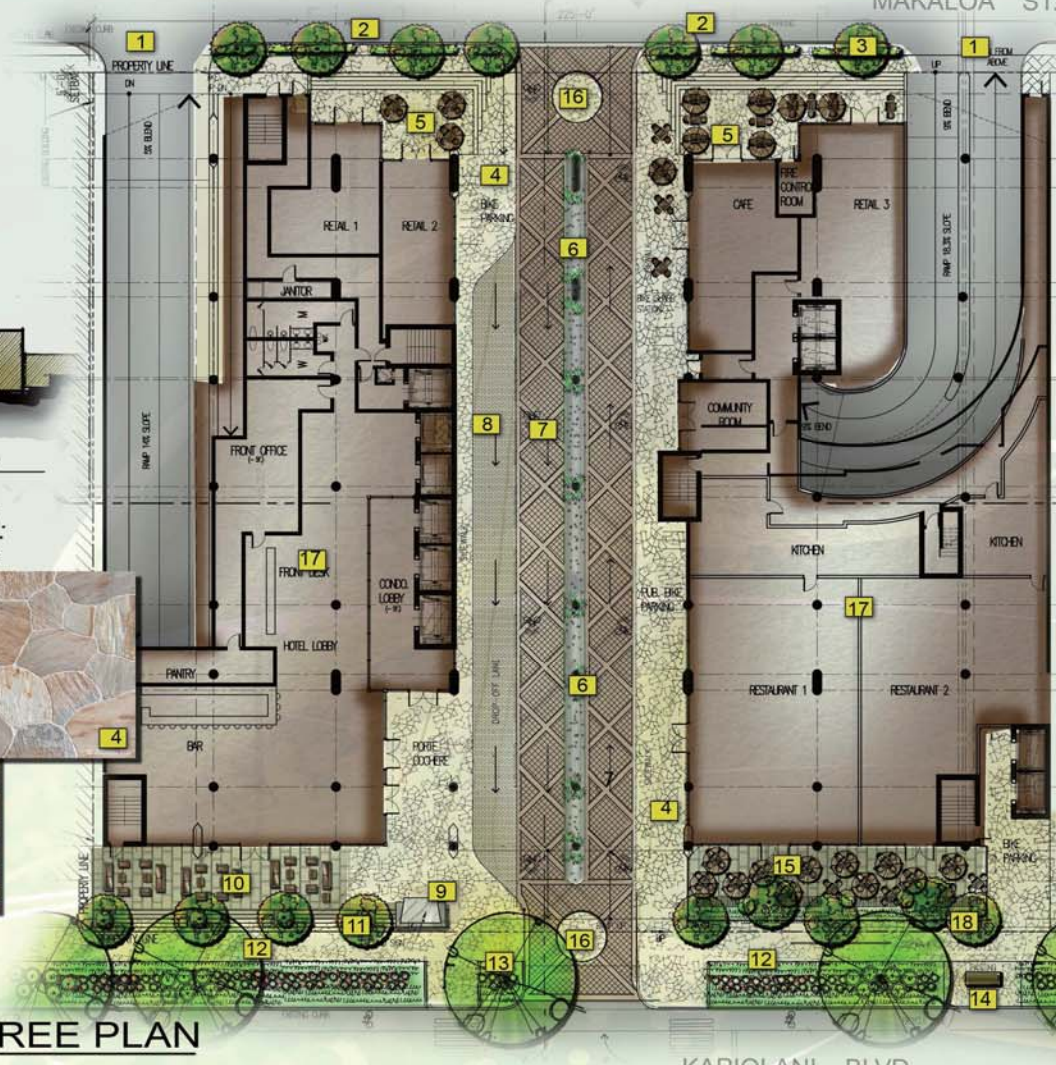
SC: NTS



NORTH

SC: 1"=30'-0"
0 15' 30' 60'

1.LANDSCAPE SITE & TREE PLAN



LANDSCAPE NOTES:

- PROJECT TOTAL LANDSCAPE SQUARE FT.
GROUND LEVEL 2100 S.F.
LEVEL 8 4980 S.F.
LEVEL 17 2200 S.F.
TOTAL: 9280 S.F.
- HEALTH OF EXISTING MONKEYPOD TREES TO BE VERIFIED BY CERTIFIED ARBORIST PRIOR TO USE OF MONKEYPODS AS DESIGNED.

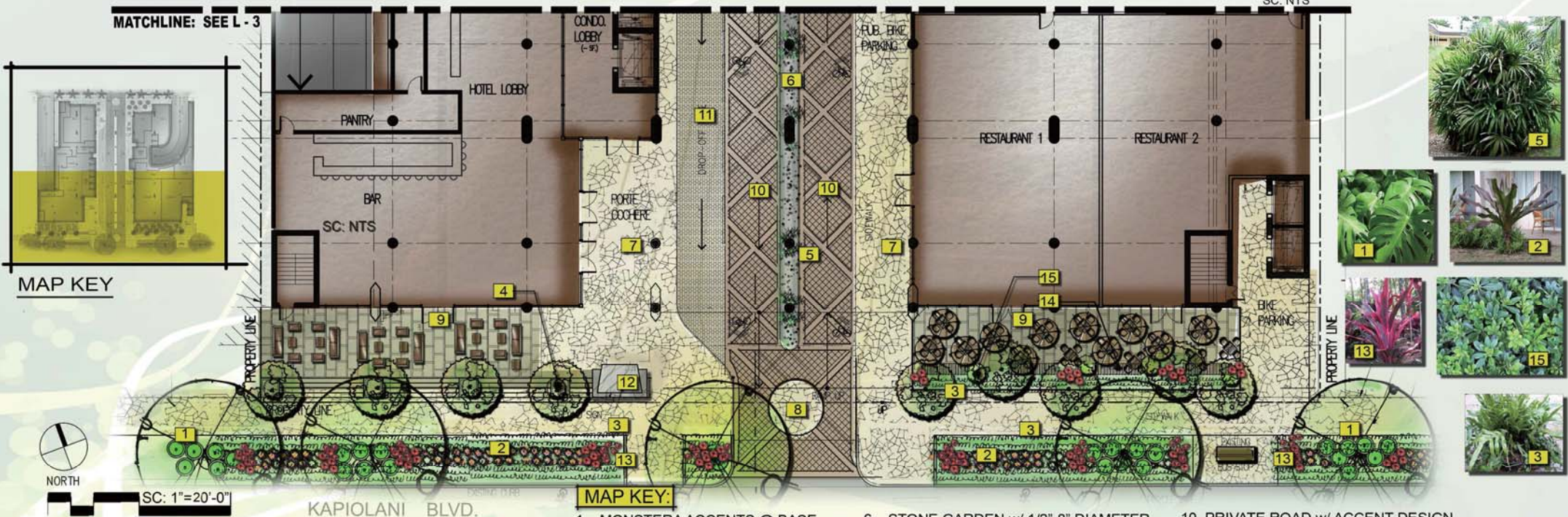
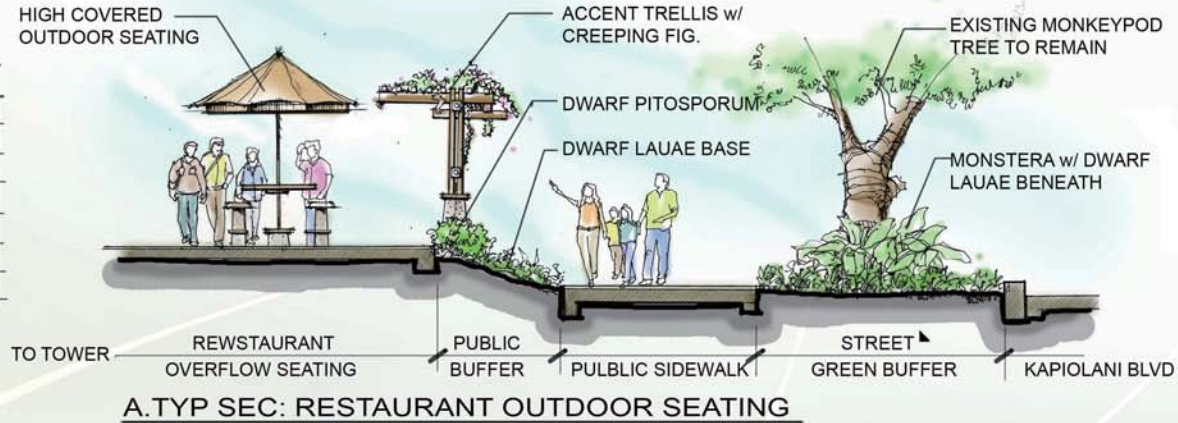


GROUND FLOOR GROUNDCOVER & SHRUB LIST

NO.	COMMON NAME	SCIENTIFIC NAME	AMT.	SIZE	NOTES
1	Monstera	<i>Monstera deliciosa</i>	30	5 g.c.	ea., clustered
2	Dwarf Lauae Fern	<i>Phymatosorus grossus</i>	650	4" pots	s.f., @ 16" o.c. staggered
3	Dwarf Pittosporum	<i>Pittosporum tobira 'Nana'</i>	20	3 g.c.	ea., @ 12" o.c., clustered
4	Red 'Lilinoe' Ti	<i>Cordyline fruticosa</i>	55	3 g.c.	ea., @ 12" o.c., clustered
5	Queen Emma Spider Lily	<i>Crinum augustum</i>	115	3 g.c.	ea., @ 24" o.c., staggered
6	Rhapis	<i>Rhapis excelsa</i>	32	5 g.c.	ea., 4 @ ea. column
7	Creeping Fig	<i>Ficus pumila</i>	22	5 g.c.	ea., trained up trellis

LANDSCAPE NOTES:

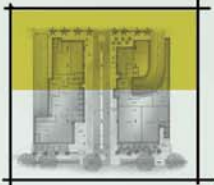
1. PLANT MATERIALS ARE COUNTED AND LISTED ONCE ONLY FOR THIS LEVEL. SEE L-3, FOR FULL QUANTITY COUNT OF PLANTS NOT LISTED IN ABOVE LIST.



1. STREET LEVEL GROUNDCOVER & SHRUB PLAN

MAP KEY:

- | | | |
|---------------------------------|--|-----------------------------------|
| 1. MONSTERA ACCENTS @ BASE | 6. STONE GARDEN w/ 1/2"-8" DIAMETER RIVER ROCK SEE: L-1, SEC 'A' | 10. PRIVATE ROAD w/ ACCENT DESIGN |
| 2. QUEEN EMMA SPIDER LILY | 7. QUARTZITE STONE PAVING - TYP. FOR PROPERTY SIDEWALK | 11. COBBLE STONE DROP-OFF ZONE |
| 3. DWARF LAUAЕ | 8. ACCENT ENTRY COMPANY DESIGN | 12. SIGN TBD BY OTHERS. |
| 4. PLANTER SEE: L-3, SEC 'A' | 9. LARGE RECTANGULAR CUT PAVERS | 13. ACCENT RED TI. |
| 5. ACCENT RHAPIS PALM & COLUMNS | | 14. TRELLIS ACCENT. SEE: SEC 'A' |
| | | 15. DWARF PITOSPORUM SHRUB |



MAP KEY



GROUND FLOOR GROUNDCOVER & SHRUB LIST

NO.	COMMON NAME	SCIENTIFIC NAME	AMT.	SIZE	NOTES
1	Tiare Gardenia Hedge	<i>Gardenia taitensis</i>	60	3 g.c.	ea. @ 30" o.c.,

LANDSCAPE NOTES:

1. PLANT MATERIALS ARE COUNTED AND LISTED ONCE ONLY FOR THIS LEVEL. SEE L-2, FOR FULL QUANTITY COUNT OF PLANTS NOT LISTED IN ABOVE LIST.

MAP KEY

1. RAMP ENTRY TO UPPER AND LOWER PARKING
2. TIARE GARDENIA HEDGE TO BUFFER STREET FROM PROPERTY SIDEWALK
3. OUTDOOR SEATING
4. ACCENT LOGO TBD BY OTHERS.- TYP.
5. OUTDOOR CAFE w SHADE UMBRELLA
6. QUARTZITE PAVING - TYP. OF COMMON SIDEWALK FOR PROPERTY
7. STONE GARDEN w/ 1/2"-8" DIAMETER RIVER ROCK SEE: L-1, SEC 'A'
8. RHAPIS PALM TO SOFTEN COLUMNS
9. COBBLE STONE DROP-OFF ZONE
10. DESIGNED PAVING FOR PRIVATE ROAD - TYP.
11. TYP. QUARTZITE PAVED ACCESS FOR STREET PARKING

AUTOGRAPH TREE w/ DWARF PITTISPORUM @ BASE.

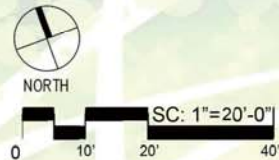
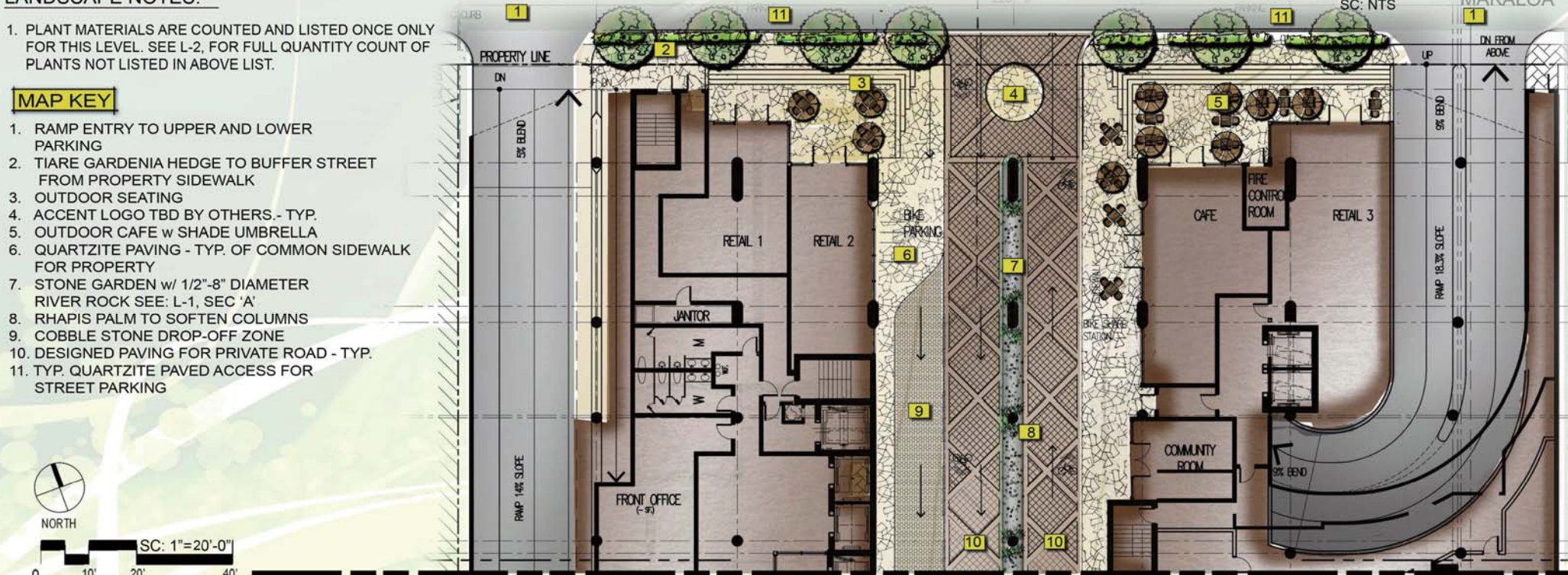
OUTDOOR FURNISHING TBD BY OTHERS. - TYP.

EXISTING MONKEYPOD TREE TO REMAIN

QUEEN EMMA SPIDER LILY w/ DWARF LAUAE BENEATH



A.TYP SEC: WEST LEISURE OUTDOOR SEATING



1. STREET LEVEL GROUNDCOVER & SHRUB PLAN

MATCHLINE: SEE L - 2

IRRIGATION LEGEND:

1. ALL IRRIGATION TO USE RAINBIRD xfs DRIP SYSTEM WITH TYP. LAYOUT:

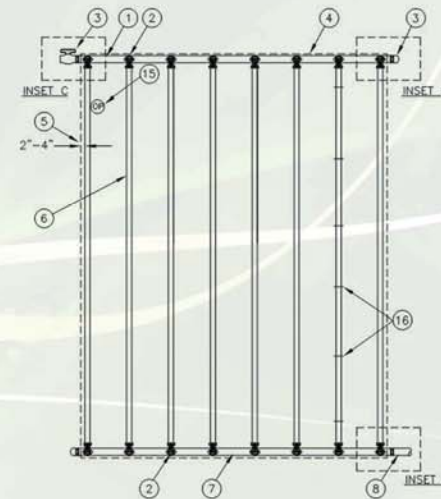
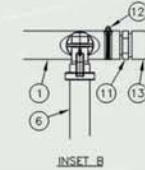
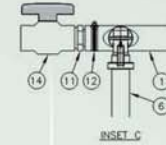
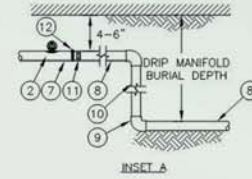
- TURF AREAS: 12" x 12" 0.6 GPH
- SHRUB/ GROUND COVER: 12" x 18" 0.6 GPH

GROUND LEVEL : FLOW REQUIREMENTS

Premise No. _____ Meter No. _____

IRRIGATION USAGE ONLY - NO CHANGE IN DOMESTIC USE

	FIXTURE UNITS (FU)	GALLONS PER MINUTE (GPM)	GALLONS PER DAY (GPD)
A. PROPOSED IRRIGATION:	20	12	450
B. TO BE REMOVED: (DEMOLITION)	0	0	0
C. TOTAL NET (A - B):	20	12	450
D. EXISTING TO REMAIN:	0	0	0
E. GRAND TOTAL (C + D)	20	12	450



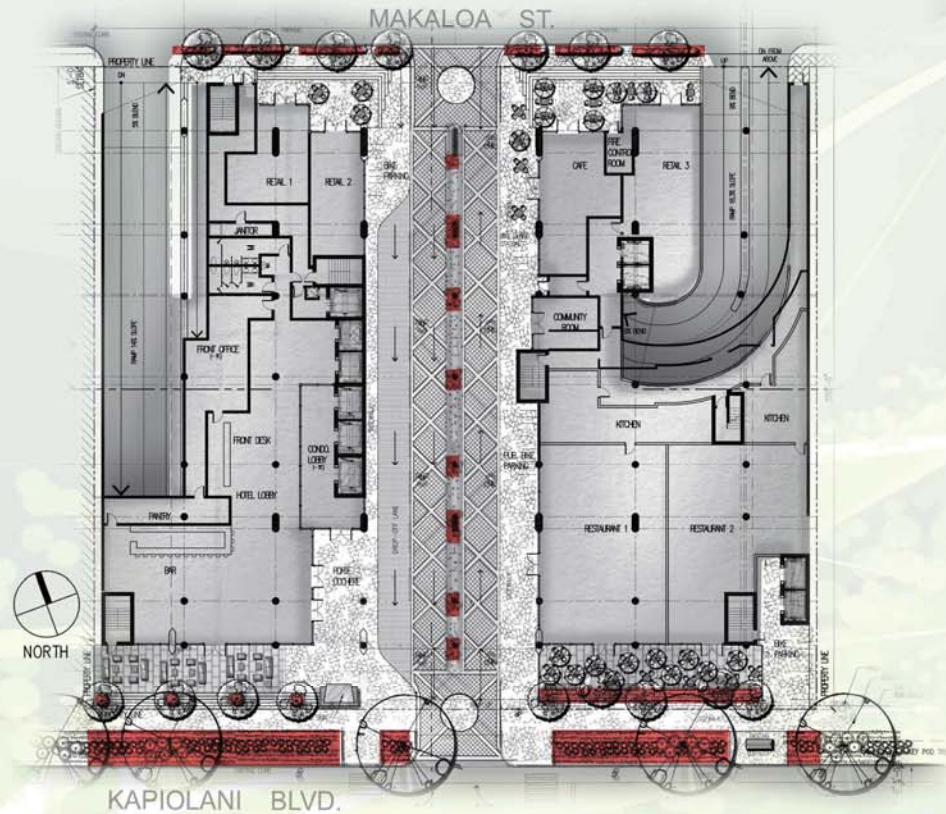
- 1 QF-FLUSH HEADER
- 2 PRE-INSTALLED BARB FITTING
- 3 FLUSH POINT WITH PVC CAP OR OPTIONAL PVC BALL VALVE
- 4 PERIMETER OF AREA
- 5 PERIMETER DRIPLINE PIPE TO BE INSTALLED 2"-4" FROM PERIMETER OF AREA
- 6 RAIN BIRD XFS SERIES DRIPLINE (TYPICAL)
- 7 QF-SUPPLY HEADER
- 8 PVC DRIP MANIFOLD FROM RAIN BIRD CONTROL ZONE VALVE KIT (SIZED TO MEET LATERAL FLOW DEMAND)
- 9 PVC SCH 40 ELL (TYPICAL)
- 10 PVC SCH 40 RISER PIPE
- 11 MALE ADAPTER INSERT
- 12 STAINLESS STEEL OETIKER OR MURRAY CLAMP
- 13 PVC SCH 40 CAP
- 14 PVC SCH 40 BALL VALVE
- 15 OPERATION INDICATOR RAIN BIRD MODEL: OPERIND
- 16 XF SERIES TIE-DOWN STAKES (TDS-050) REFER TO RAIN BIRD DRIPLINE DESIGN GUIDE FOR PROPER SPACING

NOTES:
 1. DISTANCE BETWEEN LATERAL ROWS AND EMITTER SPACING TO BE BASED ON SOIL TYPE, PLANT MATERIALS AND CHANGES IN ELEVATION. SEE INSTALLATION SPECIFICATIONS ON RAIN BIRD WEB SITE (WWW.RAINBIRD.COM) FOR SUGGESTED SPACING.
 2. LENGTH OF LONGEST DRIPLINE LATERAL SHOULD NOT EXCEED THE MAXIMUM SPACING SHOWN IN THE ACCOMPANYING TABLE.

Inlet Pressure psi	12" Spacing		18" Spacing		24" Spacing	
	Nominal Flow (gph)	0.6	Nominal Flow (gph)	0.6	Nominal Flow (gph)	0.6
15	273	155	314	250	424	322
20	318	169	353	294	508	368
30	360	230	413	350	586	414
40	395	255	465	402	652	474
50	417	285	528	420	720	488
60	460	290	596	455	780	514

XFS SUB-SURFACE DRIPLINE
 END FEED LAYOUT QF HEADER

03-31-2015
 N.T.S.



1. GROUND LEVEL DRIP IRRIGATION LAYOUT SC: 1"=40'-0"

GROUND FLOOR TREE & PALM PLANT LIST

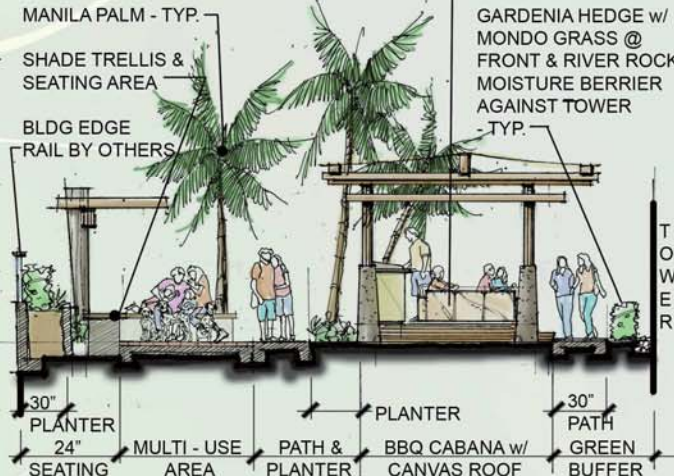
NO.	COMMON NAME	SCIENTIFIC NAME	AMT.	SIZE	NOTES
1	Manila Palm	<i>Adonidia merrillii</i>	44	f.s.	Min. 6' trk. ht. 6" Cal.
2	Singapore Plumeria	<i>Plumeria obtusa</i>	9	f.s.	Min. 6' trk. ht. 6" Cal.
3	Buddha's Belly Bamboo	<i>Bambusa ventricosa</i>	36	25 g.c.	Min. 6' ht., clustered

LANDSCAPE NOTES:

- ARTIFICIAL TURF TO BE USED FOR GRASS APPLICATION WITHIN FOOTPRINT OF TOWER ONLY. ALL ELSE TO BE NATURAL - SEE L-6

MAP KEY:

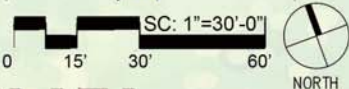
- SHADE TRELLIS & DEDICATED DOG RUN.
- 24" RAISED PLANTER BED w/ TIARE GARDENIA HEDGE - TYP. @ BLDG EDGE SEE: SEC. 'A'
- NATURAL COLOR QUARTZITE PAVING
- BBQ CABANA w/ STRETCHED CANVAS ROOF
- GRASS LAWN - TYP. ONLY OUTSIDE OF TOWER FOOTPRINT
- SINGAPORE PLUMERIA FLOWERING TREE
- RESTAURANT OVERFLOW SEATING
- POOL BAR
- HARDWOOD DECKING - TYP.
- WET CHAISE LOUNGE w/ SOUTH VIEW
- RAISED PLANTER BED, SEE: L-6, SEC 'A'
- HARDWOOD ISLAND w/ CHAISE LOUNGE & BRIDGE CONNECTION SEE: L-6, SEC 'A'
- CIRCULAR RAKED DECORATIVE SAND TRAP.
- KIDS POOL w/ SPLASH SHOWER
- FAMILY SAND LOT
- CHILDRENS TOT LOT
- ARTIFICIAL TURF PUTTING GREEN - TYP.
- ACCENT ROCK GARDEN w/ VARYING DIA. PEBBLE AND LARGE ACCENT BOULDER SEE: L-7, SEC. 'A'
- WOOD PATHWAY BRIDGE, SEE: L-7, SEC. 'A'
- REST BENCH
- STAINED & STONE TEXTURED CONCRETE STEPPING STONE
- DESIGNATED NORTH REST AREA
- BUDDHA'S BELLY BAMBOO
- MANILA PALM
- SIGNATURE LIGHT FIXTURE SEE: L-7, SEC 'A'



KAPIOLANI BLVD.

MAKALOA ST.

1.LEVEL 8 HARDSCAPE & TREE PLAN



A.TYP SEC: CABANAS & TRELLIS

SC: NTS



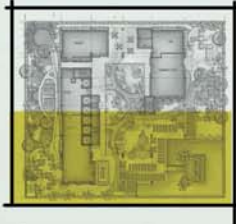
HAWAII OCEAN PLAZA, PROPOSED LANDSCAPE CONCEPT
 1362 KAPIOLANI BLVD. HONOLULU, HI 96814

DEC 12, 2016



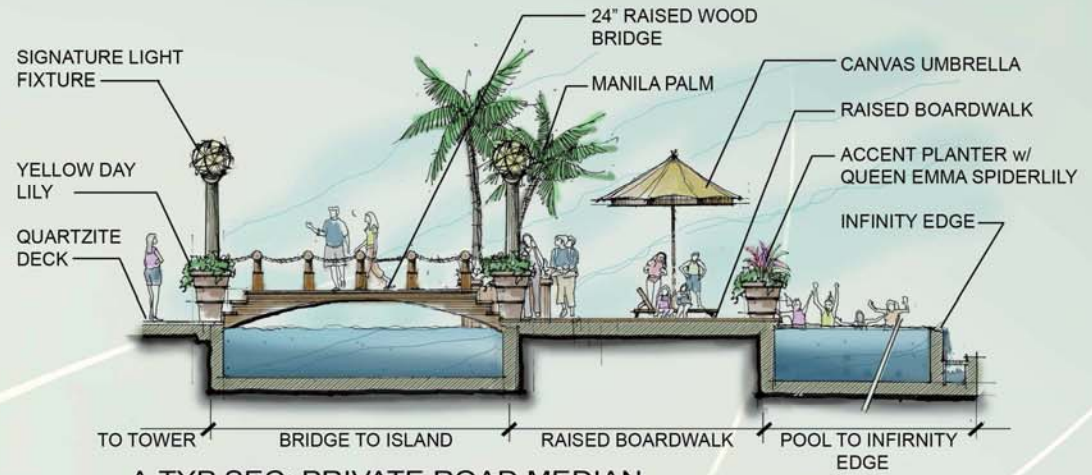
LEVEL 8: GROUNDCOVER & SHRUB LIST

NO.	COMMON NAME	SCIENTIFIC NAME	AMT.	SIZE	NOTES
1	Red 'Kimi' Ginger	<i>Alpinia purpurata</i>	110	3 g.c.	ea. @ 30" o.c., staggered
2	Red 'Lilinoe' Ti	<i>Cordyline fruticosa</i>	36	3 g.c.	ea. @ 12" o.c., clustered
3	Queen Emma Spider Lily	<i>Crinum augustum</i>	64.	3 g.c.	ea. @ 24" o.c., staggered
4	Yellow Daylily	<i>Hemerocallis 'Hyperion'</i>	40	1 g.c.	ea. @ 8" o.c., clustered
5	Tiare Gardenia Hedge	<i>Gardenia taitensis</i>	240	3 g.c.	ea. @ 30" o.c.,
6	St. Augustine grass	<i>Stenotaphrum Secundatum</i>	1730		s.f., sod
7	Dwarf Lauae Fern	<i>Phymatosorus grossus</i>	580	4" pots	ea., @ 16" o.c. staggered
8	Dwarf Japanese Juniper	<i>Juniperus procumbens 'Nana'</i>	46	5 g.c.	ea., @ 24" o.c., clustered
9	Mondo Grass	<i>Ophiopogon Japonicus</i>	120	Sprigs	s.f., 3" o.c., staggered



MAP KEY:

1. TIARE GARDENIA HEDGE - TYP. @ RAISED PERIMETER PLANTER & BLDG. EDGE TO SOFTEN RAILING
2. DWARF LAUAE FERN
3. ST. AUGUSTINE GRASS
4. 24" HT. PERIMETER PLANTER w/ MIN. 30" WIDTH BUT TO MEANDER TO HELP DEFINE SPACE & FUNCTION
5. TIARE GARDENIA HEDGE - TYP. @ BASE OF TOWER w/ MONDO GRASS AT BASE & MOISTURE RIVER ROCK BASE FACING TOWER. SEE: L-5, SEC 'A'
6. RED GINGER & QUEEN EMMA SPIDER LILY - TYP.
7. COARSE SAND GRANUALS TO CREATE CIRCLE PATTERN
8. DWARF JAPANESE JUNIPER 'NANA' - TYP.
9. 1/2"-8" VARYING RIVER ROCK BED w/ LARGE ACCENT LAVA BOULDERS - TYP.
10. ARTIFICIAL TURF PUTTING GREEN - TBD BY OTHERS
11. COARSE ARTIFICIAL TURF FOR 'RUFF'
12. STAINED, STONE TEXTURED CONCRETE STEPPING STONE w 30" TYP. WIDTH BY VARYING LENGTHS.
13. ASSORTED RED GINGERS TO FEATURE AGAINST LARGE COLUMNS w/ DWARF LAUAE @ BASE
14. YELLOW DAY LILY ACCENTS IN PLANTER BASE TO SOFTEN POSTS FOR FEATURED LIGHTS SEE: SEC 'A'
15. KIDS POOL DECK



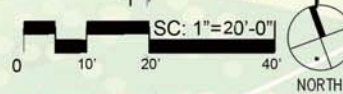
A.TYP SEC: PRIVATE ROAD MEDIAN.

SC: NTS

MATCHLINE: SEE L - 7



1.LEVEL 8 GROUNDCOVER & SHRUB PLAN



KAPIOLANI BLVD.

MAP KEY:

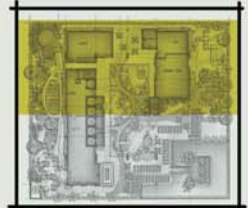
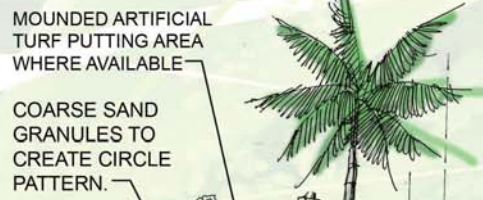
1. TIARE GARDENIA HEDGE - TYP. @ RAISED PERIMETER PLANTER & BLDG. EDGE TO SOFTEN RAILING
2. TIARE GARDENIA HEDGE - TYP. @ BASE OF TOWER w/ MONDO GRASS at BASE & MOISTURE RIVER ROCK BASE FACING TOWER. SEE: L-5, SEC 'A'
3. RED GINGER & QUEEN EMMA SPIDER LILY - TYP.
4. DWARF LAUAE FERN
5. ARTIFICIAL TURF PUTTING GREEN - TBD B
6. 1/2"-8" VARYING RIVER ROCK BED w/ LARGE ACCENT LAVA BOULDERS
7. STAINED, STONE TEXTURED CONCRETE STEPPING STONE w 30" TYP. WIDTH BY VARYING LENGTHS.
8. COARSE SAND GRANULES TO CREATE CIRCLE PATTERN
9. DWARF JAPANESE JUNIPER 'NANA' - TYP.
10. ST. AUGUSTINE GRASS
11. FAMILY SAND PIT & REST AREA
12. RESTING BENCH
13. TOT LOT
14. NATURAL COLOR QUARTZITE
15. DOG RUN w/ POROUS STONE DECK
16. SHADE TRELLIS SEATING AREA/ MUTLI-USE AREA
17. KIDS POOL DECK
18. KIDS POOL DECK
19. HARDWOOD FAMILY DECK



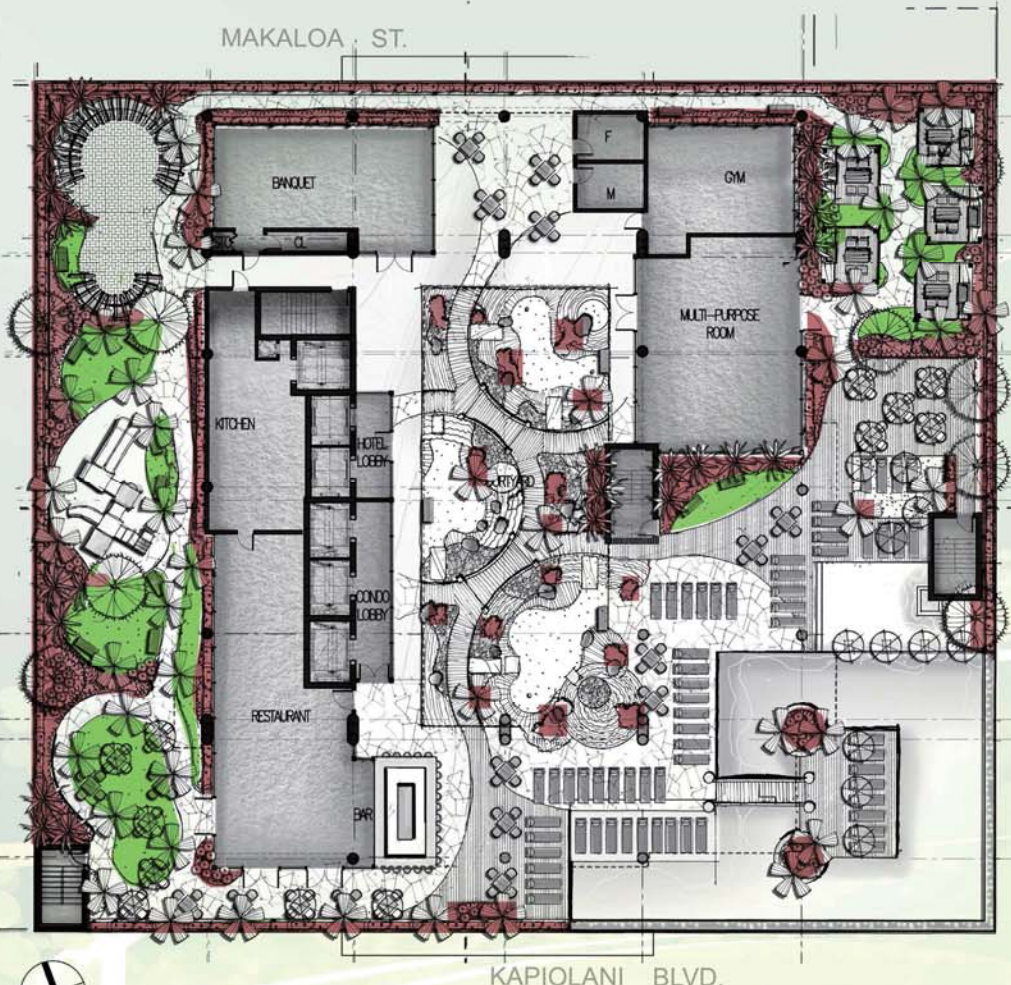
1. LEVEL 8, GROUNDCOVER & SHRUB PLAN

SC: 1"=20'-0"
0 10' 20' 40'

MATCHLINE: SEE L - 6



MAP KEY:



IRRIGATION LEGEND:

1. ALL IRRIGATION NEEDS TO USE RAINBIRD xfs DRIP SYSTEM WITH TYP. LAYOUT.

- TURF AREAS: 12" x 12" 0.6 GPH
- SHRUB/ GROUNDCOVER: 12" x 18" 0.6 GPH

- 2. REFER TO L-4 FOR TYP. DRIP DETAILS
- 3. PUTTING GREEN WITHIN FOOTPRINT OF TOWER TO USE ARTIFICIAL TURF w/ NO IRRIGATION NEED.

8th FLOOR LEVEL : FLOW REQUIREMENTS

Premise No. _____ Meter No. _____

IRRIGATION USAGE ONLY - NO CHANGE IN DOMESTIC USE

	FIXTURE UNITS (FU)	GALLONS PER MINUTE (GPM)	GALLONS PER DAY (GPD)
A. PROPOSED IRRIGATION:	22	18	1850
B. TO BE REMOVED: (DEMOLITION)	0	0	0
C. TOTAL NET (A - B):	22	18	1850
D. EXISTING TO REMAIN:	0	0	0
E. GRAND TOTAL (C + D)	22	18	1850

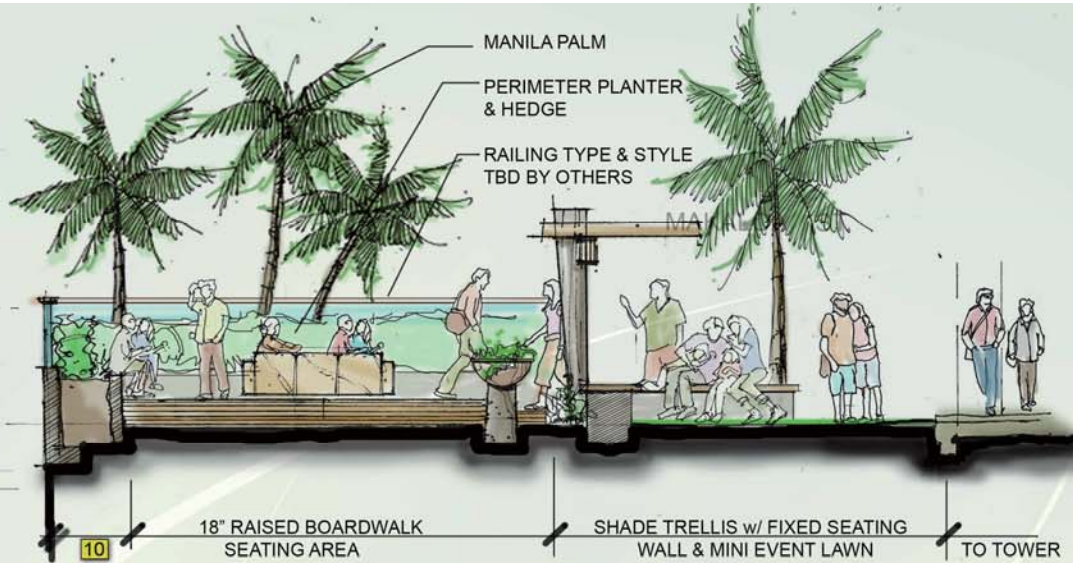
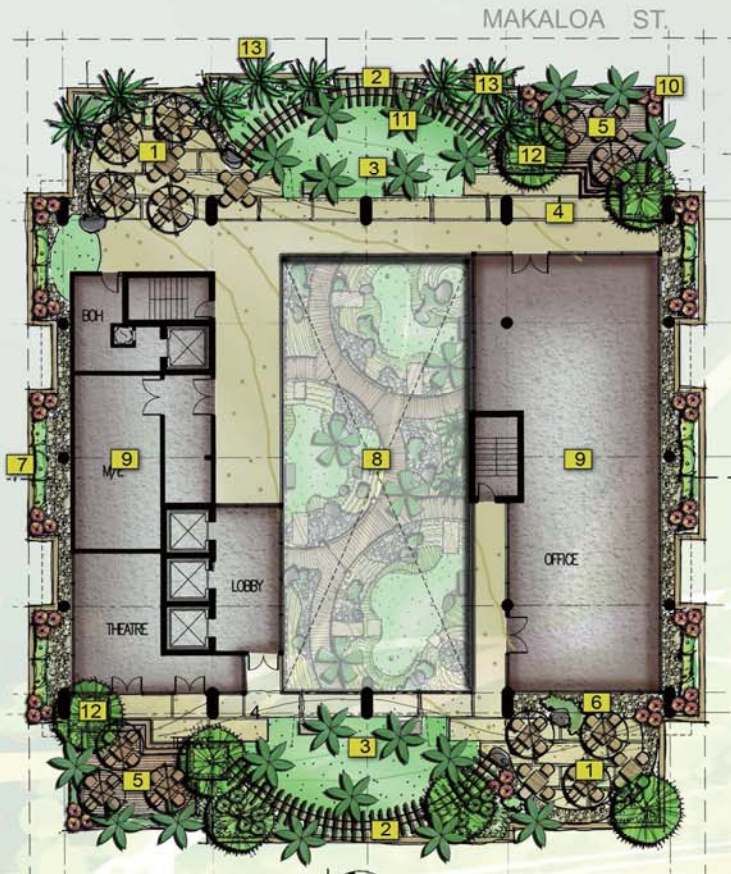


1. LEVEL 8 DRIP IRRIGATION LAYOUT



LANDSCAPE NOTES:

1. SPACE TO BE OVER PLANTED w/ SIZE & QUANTITY TO GIVE 'GREEN' APPEAL TO A SMALL SPACE
2. WHERE PLANTS ARE ADJACENT TO BUILDING, 24" MIN. PEBBLE ROCK MOISTURE BARRIER IN THE FORM OF A ROCK GARDEN IS TO BE INTRODUCED.



A.TYP SEC: SHADE TRELLIS & RAISED SEATING

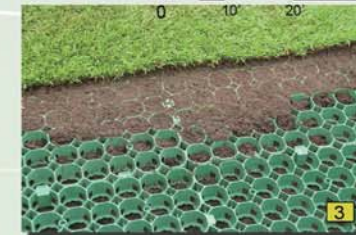
SC: NTS

MAP KEY:

1. OVERFLOW w/ TABLE & SEATING OPTIONS TO VARY
2. SHADE TRELLIS & FIXED LOW SEATING WALL, SEE SEC 'A'
3. MINI EVENT LAWN & 'GREEN' OVERFLOW
4. LARGE 36" WIDTH SLABS w LENGTH TO VARY & 4" GRASS OR GRAVEL INLAYS
5. RAISED BOARD SEATING AREA
6. ROCK GARDEN w/ ACCENT PLANT MATERIALS SIMILAR TO ZEN GARDEN BENEATH @ 8TH FLOOR
7. LANDSCAPE TO BUFFER OR ACCENT VIEW BEYOND
8. OPEN ATRIUM TO PUTTING GREEN/ ZEN GARDEN BELOW
9. TYP. TOWER FOOT PRINT
10. RAISED PERIMETER PLANTER - TYP. @ BLDG. EDGE w/ RAIL STYLE TBD BY OTHERS
11. LARGE MANILA PALM
12. SINGAPORE PLUMERIA
13. BUDDAH'S BELLY BAMBOO



SC: T-20'-0"



3



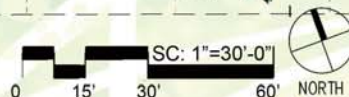
2



4

17TH LEVEL HARDSCAPE & PALM PLANT LIST

NO.	COMMON NAME	SCIENTIFIC NAME	AMT.	SIZE	NOTES
1	Manila Palm	<i>Adonia merillii</i>	20	f.s.	Min. 6' trk. ht. 6" Cal.
2	Singapore Plumeria	<i>Plumeria obtusa</i>	7	f.s.	Min. 6' trk. ht. 6" Cal.
3	Buddha's Belly Bamboo	<i>Bambusa ventricosa</i>	16	25 g.c.	Min. 6' ht., clustered



1. LEVEL 17 HARDSCAPE & TREE PLAN

17TH LEVEL SHRUB & GROUNDCOVER PLANT LIST

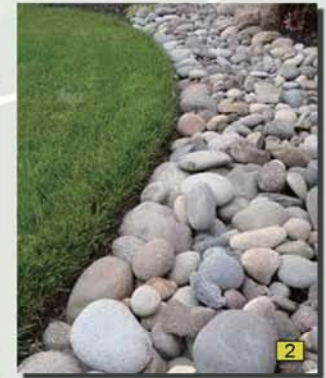
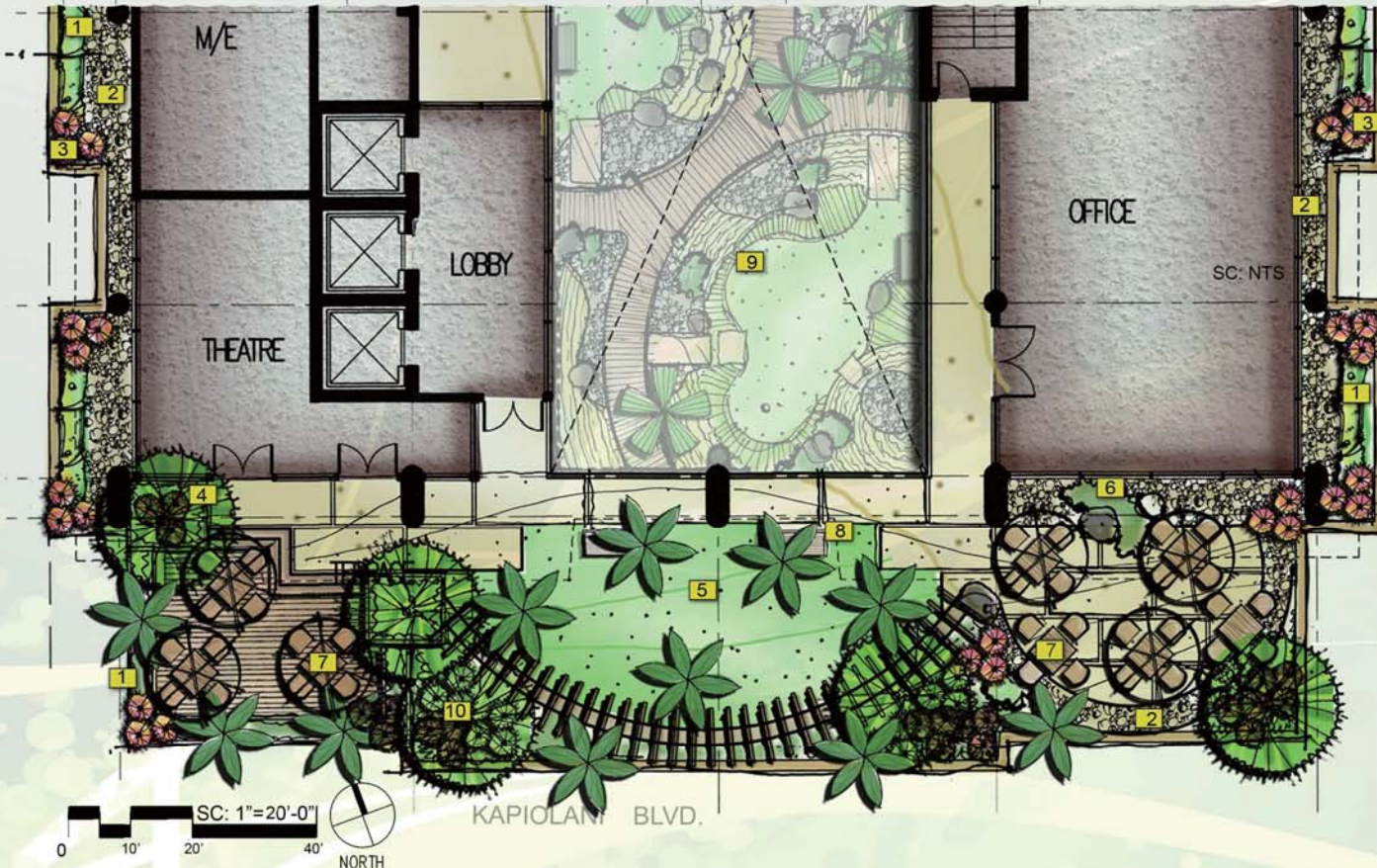
NÖ.	COMMON NAME	SCIENTIFIC NAME	AMT.	SIZE	NOTES
1	Red 'Kimi' Ginger	<i>Alpinia purpurata</i>	30	3 g.c.	ea. @ 18" o.c., staggered
2	Red 'Liinoe' Ti	<i>Cordyline fruticosa</i>	30	3 g.c.	ea. @ 12" o.c., clustered
3	Tiare Gardenia Hedge	<i>Gardenia taitensis</i>	50	3 g.c.	ea. @ 30" o.c.,
4	St. Augustine grass	<i>Stenotaphrum Secundatum</i>	750		s.f., sod
5	Dwarf Lauae Fern	<i>Phymatosorus grossus</i>	80	4" pots	ea., @ 16" o.c. staggered
6	Dwarf Japanese Juniper	<i>Juniperus procumbens 'Nana'</i>	18	5 g.c.	ea., @ 24" o.c., clustered

LANDSCAPE NOTES:

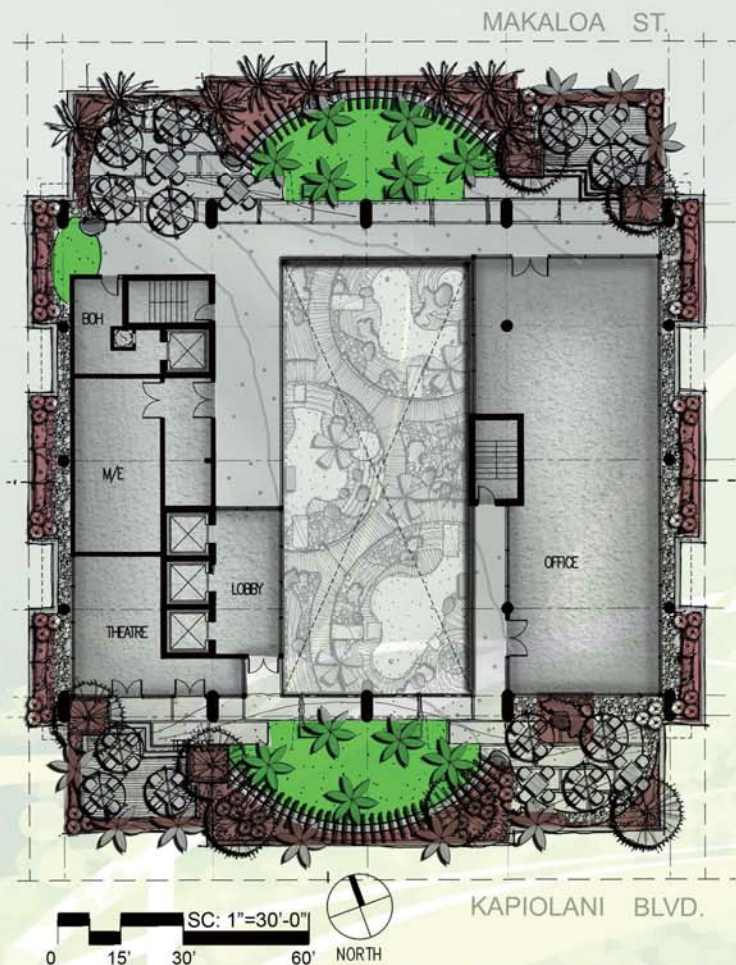
1. SPACE TO BE OVER PLANTED w/ SIZE & QUANTITY TO GIVE 'GREEN' APPEAL TO A SMALL SPACE
2. WHERE PLANTS ARE ADJACENT TO BUILDING, 24" MIN. PEBBLE ROCK MOISTURE BARRIER IN THE FORM OF A ROCK GARDEN IS TO BE INTRODUCED.
3. RED GINGER TO BE USED IN CORNERS BEHIND TRELLIS & BENEATH TREE/ BAMBOO

MAP KEY:

1. TIARE GARDENIA HEDGE - TYP. @ PERIMETER
2. MOISTURE BARRIER/ DECORATIVE ROCK GARDEN
3. QUEEN EMMA SPIDER LILY
4. DWARF LAUAE FERN - TYP. GROUND COVER AT BASE OF SHRUBS AND FOR PLANTERS
5. ST. AUGUSTINE GRASS OVERFLOW w/ ENGINEERED PAVERS TO MAINTAIN GREEN APPEAL w/ FOOT TRAFFIC
6. DWARF JAPANES JUNIPER - TYP. IN ROCK GARDEN
7. BENCHES/ OUTDOOR FURNISHING TBD BY OTHERS
8. REST BENCH
9. ATRIUM w/ PUTTING GREEN/ ZEN GARDEN BENEATH @ 8TH FLOOR
10. RED GINGER



1. LEVEL 17 TYP. SHRUB & GROUNDCOVER PLAN



IRRIGATION LEGEND:

1. ALL IRRIGATION NEEDS TO USE RAINBIRD xfs DRIP SYSTEM WITH TYP. LAYOUT:

- TURF AREAS: 12" x 12" 0.6 GPH
- SHRUB/ GROUNDCOVER: 12" x 18" 0.6 GPH

2. REFER TO L-4 FOR TYP. DRIP DETAILS
 3. PUTTING GREEN WITHIN FOOTPRINT OF TOWER TO USE ARTIFICIAL TURF w/ NO IRRIGATION NEED.

17th FLOOR LEVEL: FLOW REQUIREMENTS

Premise No. _____ Meter No. _____
 IRRIGATION USAGE ONLY - NO CHANGE IN DOMESTIC USE

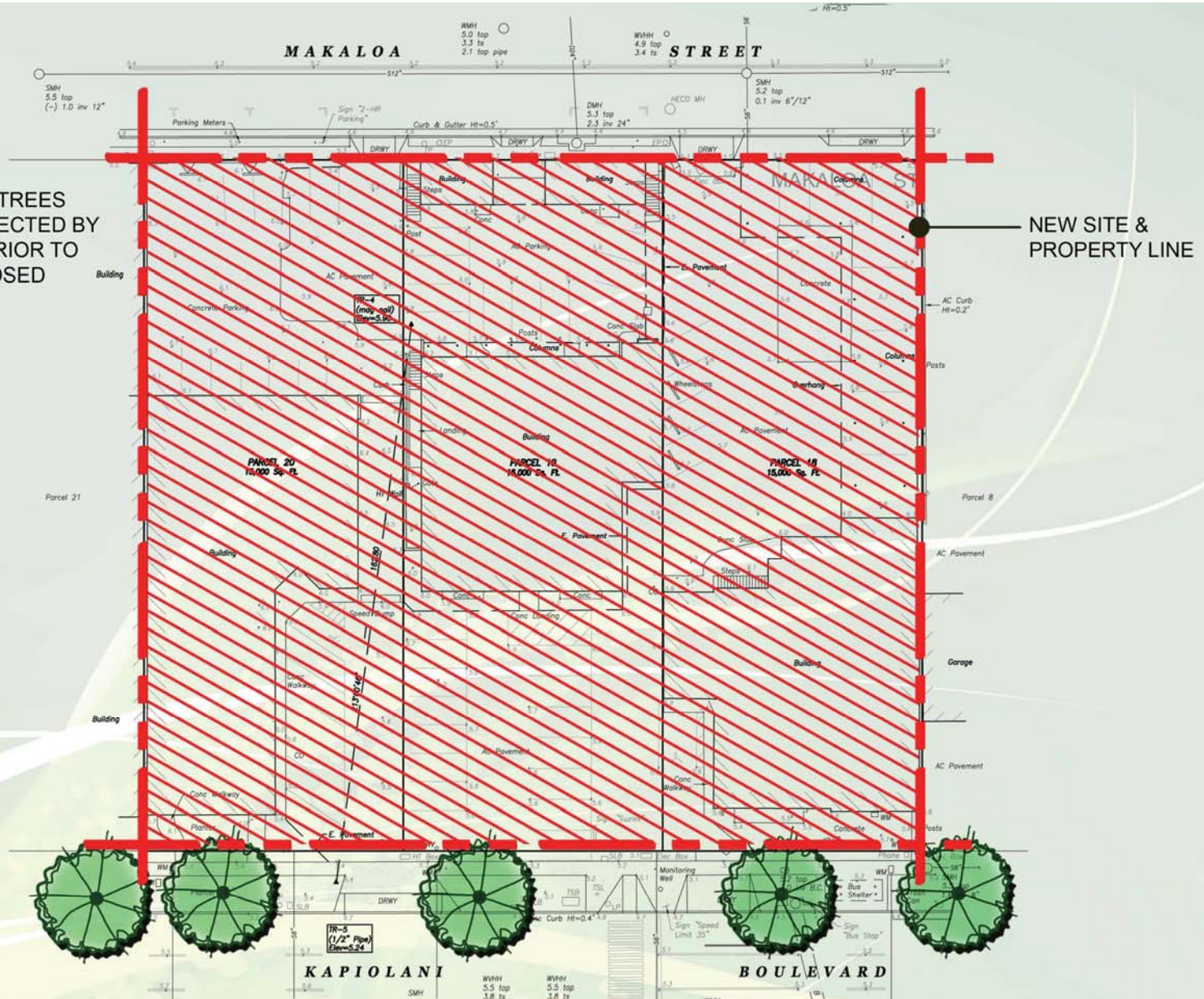
	FIXTURE UNITS (FU)	GALLONS PER MINUTE (GPM)	GALLONS PER DAY (GPD)
A. PROPOSED IRRIGATION:	22	14	1120
B. TO BE REMOVED: (DEMOLITION)	0	0	0
C. TOTAL NET (A - B):	22	14	1120
D. EXISTING TO REMAIN:	0	0	0
E. GRAND TOTAL (C + D)	22	14	1120

1. LEVEL 17 DRIP IRRIGATION PLAN

TREE LEGEND



EXISTING MONKEYPOD TREES TO REMAIN, TO BE INSPECTED BY CERTIFIED ARBORIST PRIOR TO USE AS PART OF PROPOSED LANDSCAPE DESIGN



NORTH
SC: 1"=30'-0"
0 15' 30' 60'

1. TREE DISPOSITION PLAN

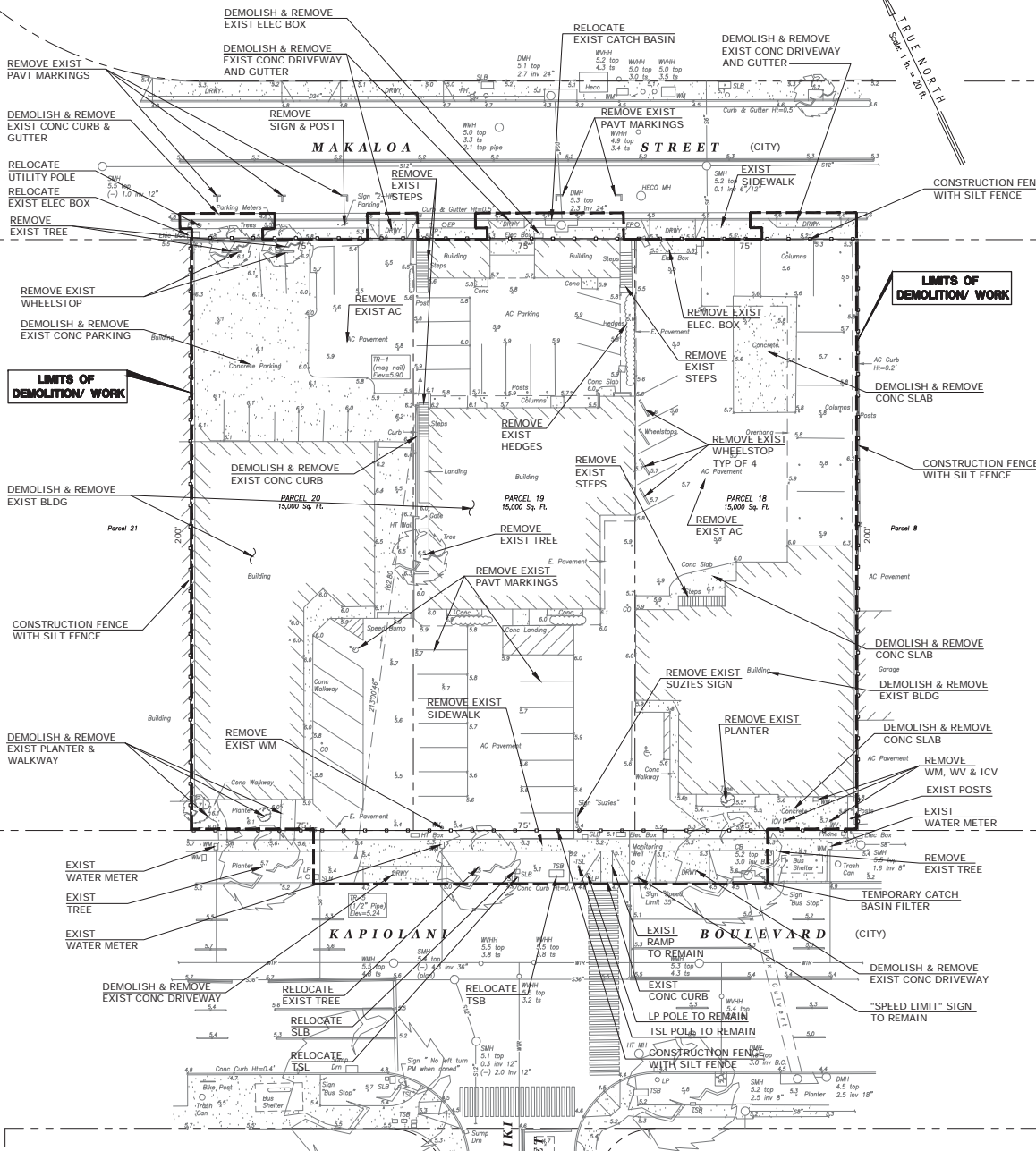


HAWAII OCEAN PLAZA, PROPOSED LANDSCAPE CONCEPT
1362 KAPIOLANI BLVD. HONOLULU, HI 96814

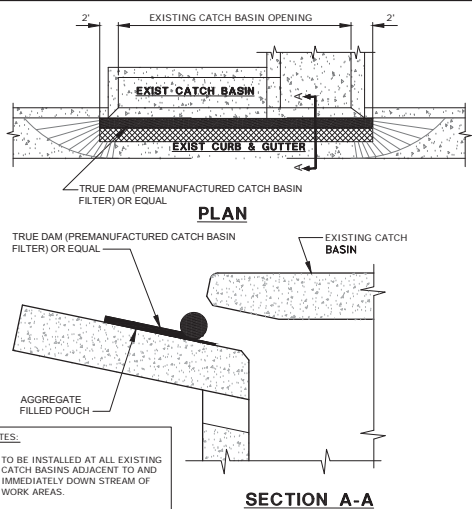
DEC 12, 2016



2953 HOPSHAW/HIDA, OKAWOTO & ASSOCIATES, INC.



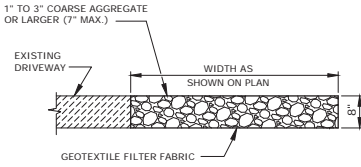
SCHEMATIC DEMOLITION PLAN
SCALE: 1" = 20'



NOTES:

1. TO BE INSTALLED AT ALL EXISTING CATCH BASINS ADJACENT TO AND IMMEDIATELY DOWN STREAM OF WORK AREAS.
2. INSTALL AS PER MANUFACTURERS RECOMMENDATIONS.

CATCH BASIN INLET FILTER SCALE NONE 1



CONSTRUCTION ACCESS PAD SCALE NONE 2

- DEMOLITION NOTES:**
1. WITHIN THE LIMITS OF DEMOLITION DEMOLISH AND REMOVE ALL STRUCTURES, PAVEMENTS, LANDSCAPING FENCING AND UTILITIES UNLESS INDICATED TO REMAIN. COORDINATE ANY ENVIRONMENTAL REMEDIATION WORK WITH THE ENVIRONMENTAL ENGINEER.
 2. COORDINATE DISCONNECTION OF UTILITIES WITH THE APPROPRIATE UTILITY AGENCIES.
 3. PLACE 4" GRAVEL LAYER OVER A GEOTEXTILE FABRIC OVER ANY UNPAVED AREAS AFTER DEMOLITION IS COMPLETED.



ARCHITECT:
THIS WORK WAS PREPARED BY ME OR UNDER MY SUPERVISION AND CONSTRUCTION OF THE PROJECT WILL BE UNDER MY OBSERVATION.



License Expiration Date: 4/30/2016
NOTE: CONTRACTOR SHALL CHECK AND VERIFY ALL DIMENSIONS AT JOB BEFORE PROCEEDING WITH WORK.

CALIFORNIA INVESTMENT REGIONAL CENTER LLC

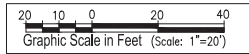
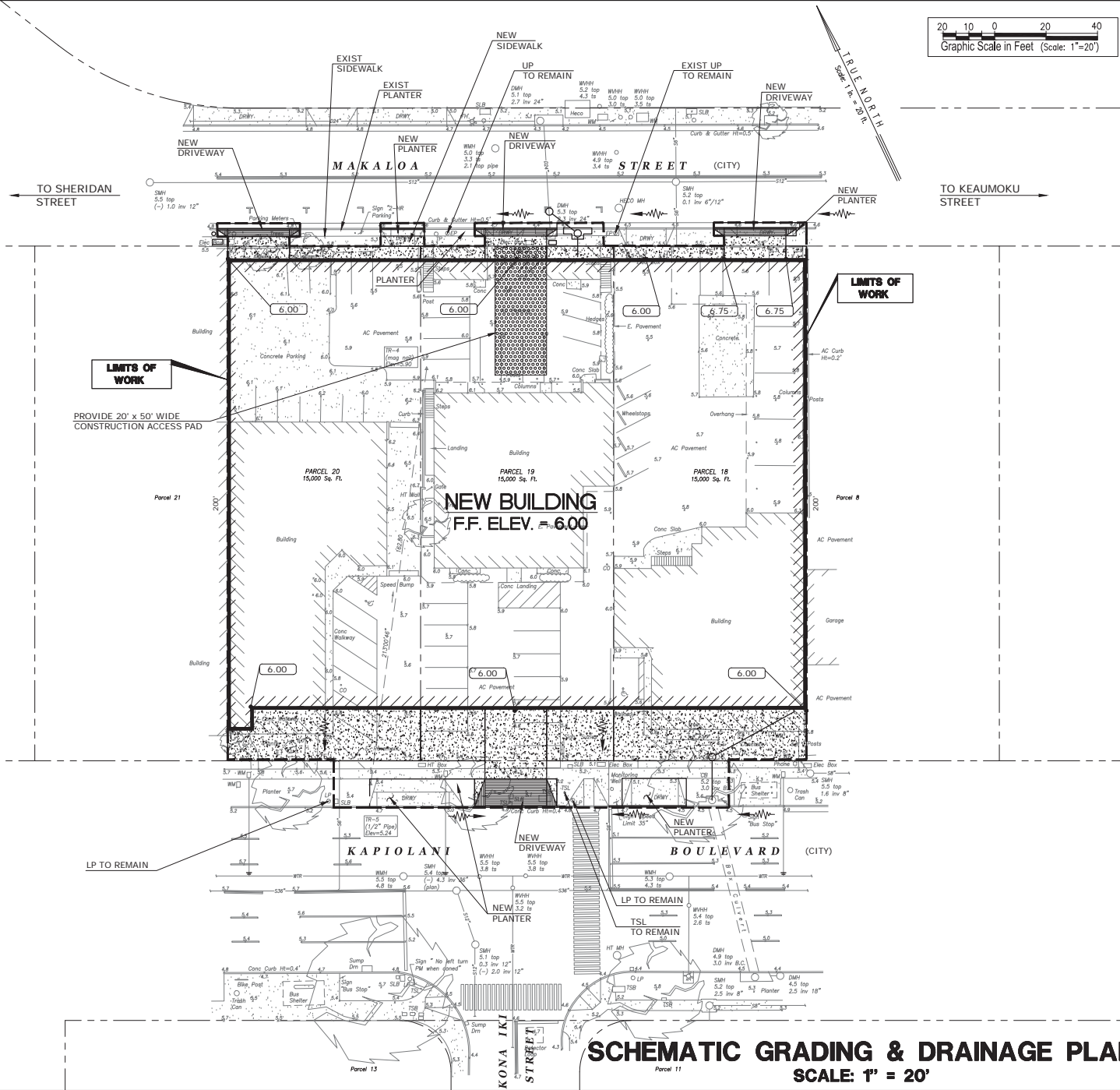
Hawaii Ocean Plaza
Honolulu, Hawaii
TMK: 2-3-16-0187 019/0 20

DATE: 2016 NOVEMBER 18
PROJECT # 16009

SHEET TITLE
SCHEMATIC DEMOLITION PLAN

SHEET NO.
SKC101

2953 HOPSHILL/HIDA, OKAWOTO & ASSOCIATES, INC.



LEGEND		
EXISTING	DESCRIPTION	NEW
---	EXISTING GRADE (EG)	
---	NEW FINISH GRADE (FG)	6.90 FG
---	DRAINAGE FLOW	---
---	WATERLINE	---
---	SEWER LINE	---
---	DRAIN LINE	---



ARCHITECT:
 THE WORK WAS PREPARED BY ME OR UNDER MY SUPERVISION AND CONSTRUCTION OF THE PROJECT WILL BE UNDER MY OBSERVATION.

ALAN T. OKAWOTO
 LICENSED PROFESSIONAL ENGINEER
 No. 5483-C
 HAWAII, U.S.A.
 License Expiration Date: 4/30/2018

NOTE: CONTRACTOR SHALL CHECK AND VERIFY ALL DIMENSIONS AT JOB BEFORE PROCEEDING WITH WORK.

CALIFORNIA INVESTMENT REGIONAL CENTER LLC

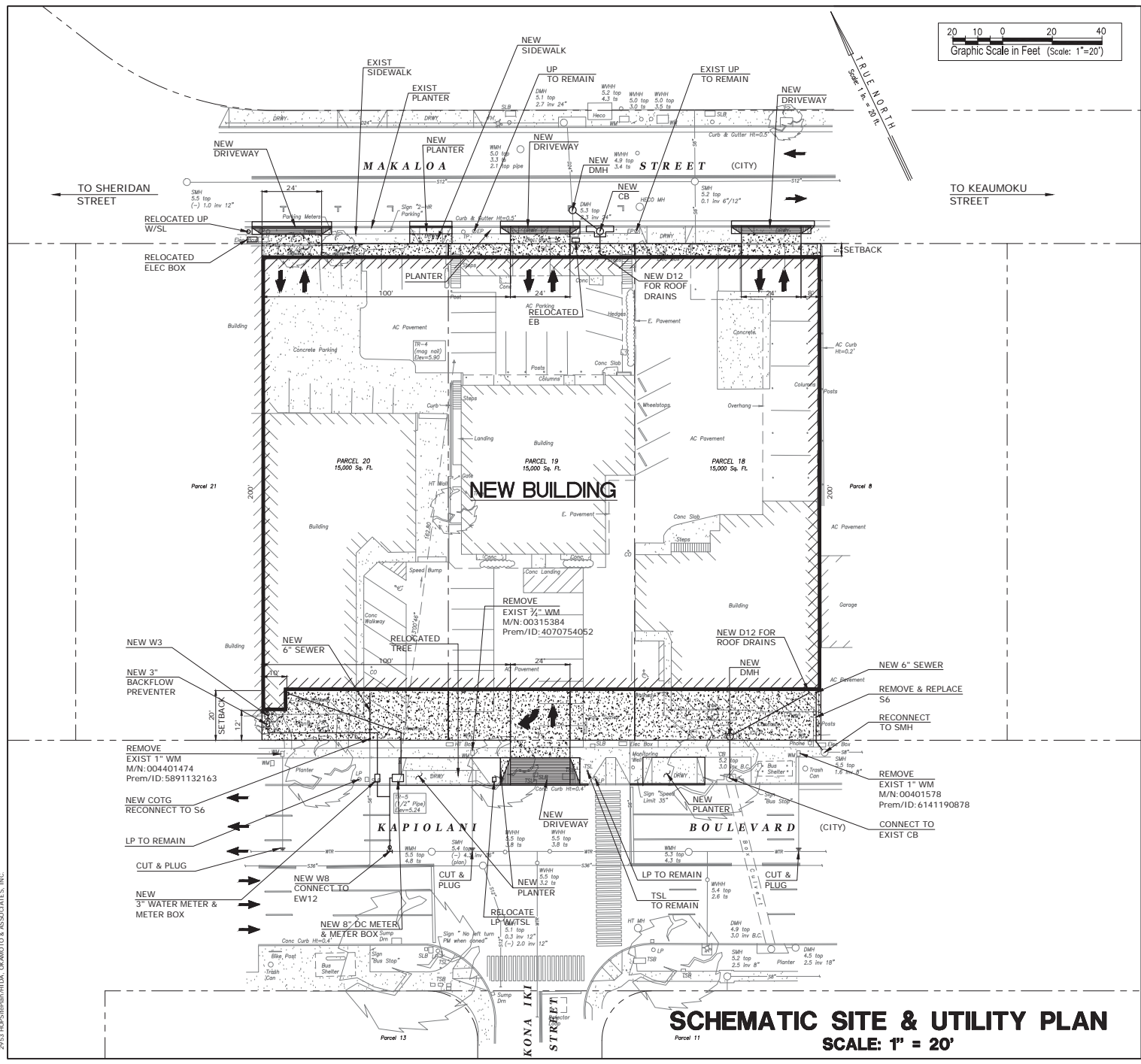
Hawaii Ocean Plaza
 Honolulu, Hawaii
 TMK: 2-3-3-16: 0187 / 019 / 0 20

DATE: 2016 NOVEMBER 18
 PROJECT # 16009

SHEET TITLE
 SCHEMATIC GRADING & DRAINAGE PLAN

SHEET NO.
 SKC102

SCHEMATIC GRADING & DRAINAGE PLAN
 SCALE: 1" = 20'



SCHMATIC SITE & UTILITY PLAN

SCALE: 1" = 20'



ARCHITECT:
THE WORK WAS PREPARED BY ME
OR UNDER MY SUPERVISION AND
CONSTRUCTION OF THE PROJECT
WILL BE UNDER MY OBSERVATION.

ALAN T. OKAMOTO
LICENSED
PROFESSIONAL
ENGINEER
No. 5483-C
HAWAII, U.S.A.
License Expiration Date: 4/30/2016

NOTE: CONTRACTOR SHALL CHECK
AND VERIFY ALL DIMENSIONS AT JOB
BEFORE PROCEEDING WITH WORK.

CALIFORNIA
INVESTMENT
REGIONAL
CENTER LLC

Hawaii Ocean Plaza
Honolulu, Hawaii
TMK-2-3-16-018 / 019 / 0 20

DATE: 2016 NOVEMBER 18
PROJECT # 16009

SHEET TITLE
SCHMATIC
SITE & UTILITY
PLAN

SHEET NO.
SKC103

2953 HOPSHAM/HD, OKAMOTO & ASSOCIATES, INC.